

BELPAFLON PL

EXPANDED P.T.F.E. SHEET FOR GASKETS

TECHNICAL DATA SHEET

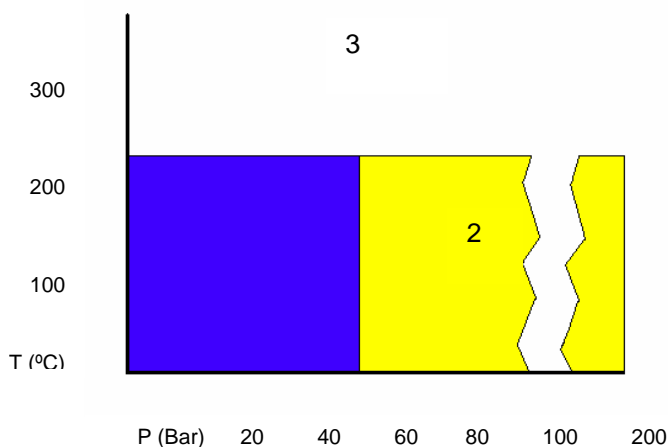
□ COMPOSITION

BELPAFLON PL is made of pure 100% expanded P.T.F.E. processed in a manufacturing way that produces a microstructure with a high number of multidirectional orientation of the fibers. This process confers a great structural uniformity that gives the material the necessary qualities to be used in a wide range of applications. BELPAFLON PL is recommended where high resistance to chemical attack and corrosion is required and, in special, for chemical, pharmaceutical and food industry (FDA homologation).

□ TECHNICAL DATA

Colour	White
Standard sizes (mm)	1500 x 1500
Standard thickness (mm). Other upon request	1,5 : 3,0
Density ($\pm 10\%$)	0.6 g/cm ³
Temperature, min./max. °C	-268 / +260
Leakage Rate (N ₂) cm ³ /min. DIN 3535	0.01
Compressibility ASTM F-36 A	66
Recovery ASTM F-36 A	16
Recovery (mm) 28090-2	0.02
Hot creep at 200°C $\xi_{wsw/200}$ (%)	13
Cold compressibility ξ_{KSW} (%)	23
Cold recovery ξ_{KRW} (%)	4
Maximum Pressure (bar)	160

PRESSURE-TEMPERATURE DIAGRAM



P-T OPERATING GUIDELINES

1- Usually satisfactory to use without reference to Montero. Technical examination is normally unnecessary.

2- Must refer to Montero for advice. A technical examination is recommended

3- Area not recommended.

The P-T diagram helps the user or designer who often knows the operating temperature and pressure to carry out an initial selection of a suitable material . The P-T diagram cannot guarantee the suitability of a material for an application.

CERTIFICATIONS: FDA, DvGW, BAM, TÜV.