

BELPAGRAF

PURE EXPANDED MINERAL GRAPHITE FOR GASKET

TECHNICAL DATA SHEET

□ COMPOSITION

Pure expanded mineral graphite laminated. Due the natural characteristics of graphite this is a high quality material with an universal use in high pressure and temperature services. Excellent resistance to steam. Meets most refinery, petrochemical and industrial service requirements for long time periods and a wide range of temperatures. **API 607 FIRE SAFE TEST APPROVAL.**

Three different grades are manufactured:

BELPAGRAF SL/GL: pure mineral expanded graphite laminate.

BELPAGRAF SR/GR: laminate with flat 316/316L stainless steel insert (0.05 mm thick). Recommended for steam applications.

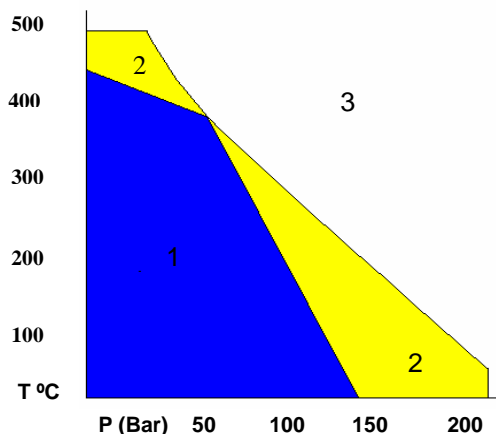
BELPAGRAF SE/GE: laminate mechanically bonded to a 316/316L stainless steel tanged insert (0,1 mm thick). Grade for high pressures and temperatures.

□ TECHNICAL DATA

COLOUR	Grey
Standard sizes (mm) Other upon request	1500x1500
Standard thickness (mm). Other upon request	0.8, 1, 1,5, 2, 3
Density ($\pm 10\%$)	1.20 g/cm ³
Compressibility ASTM F-36 A	40%
Elastic recovery ASTM F-36 A	20%
Creep Relaxation ASTM F-38	<4%
Gas permeability DIN 3535 modified	<0.01 cm ³ /min
Carbon content	>99.5%
Ash content	<0.5%
Functional Temperature range:	
Non-oxidizing environment	-200 to 3000 °C
Air or oxygen environment	-200 to 500 °C
In Steam	-200 to 700 °C
Maximum Pressure	220 bar
Sublimation point	3300 °C

Typical properties for 2 mm thickness.

PRESSURE-TEMPERATURE DIAGRAM*



*: **BELPAGRAF SE**

P-T OPERATING GUIDELINES

1- Usually satisfactory to use without reference to Montero. Technical examination is normally unnecessary.

2- Must refer to Montero for advice. A technical examination is recommended

3- Area not recommended.

The P-T diagram helps the user or designer who often knows the operating temperature and pressure to carry out an initial selection of a suitable material . The P-T diagram cannot guarantee the suitability of a material for an application