

# NEW BELPA® CSA-25

## COMPRESSED SHEET FOR GASKETS

### TECHNICAL DATA SHEET

#### □ COMPOSITION

Compressed sheets manufactured with organic and mineral fibers mixed in a rubber matrix. The product BELPA® CSA – 25 is suitable for a wide range of applications with low levels of responsibility. This material has low gas permeability and cost, that makes this asbestos-free product suitable for most common uses (air, water, some oil and heavy grease).

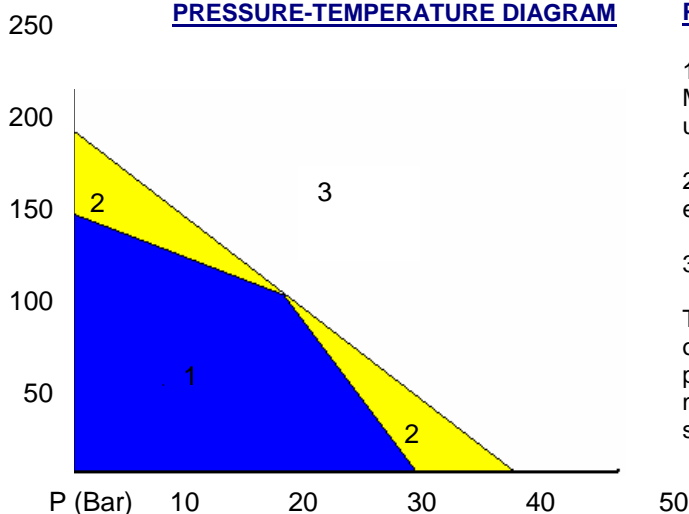
Material specially designed for water, air, gas and general moderated applications.

#### □ TECHNICAL DATA

COLOUR	Green
Binder	Natural Rubber
Standard sizes (mm) Other upon request	2000 x 1500
Standard thickness (mm). Other upon request	0.5, 0.8; 1, 1.5, 2, 3
Density ( $\pm 10\%$ )	1.65 g/cm <sup>3</sup>
Compressibility ASTM F-36 A	15% - 20%
Recovery ASTM F-36 A	>35%
Creep Relaxation ASTM F-38	15%
Transverse tensile strength ASTM F-152	Min 5 MPa
Gas permeability DIN 3535/6	< 0.05 cm <sup>3</sup> /min
THICKNESS INCREASE ASTM F-146	
ASTM oil N°1 5h 150°C	<25%
Maximum Temperature	220°C
Continuous Temperature	180°C
Maximum Pressure	45 bar

Typical properties for 2 mm thickness.

#### PRESSURE-TEMPERATURE DIAGRAM



#### P-T OPERATING GUIDELINES

1- Usually satisfactory to use without reference to Montero. Technical examination is normally unnecessary.

2- Must refer to Montero for advice. A technical examination is recommended

3- Area not recommended.

The P-T diagram helps the user or designer who often knows the operating temperature and pressure to carry out an initial selection of a suitable material. The P-T diagram cannot guarantee the suitability of a material for an application.